

# FireLock® Low-Profile Sprinkler-Tee



**STYLE 912**

The Style 912 Low-Profile Sprinkler-tee provides a ½" outlet for connecting sprinklers directly, to 1", 1-¼", and 1-½" piping systems. The Style 912 outlet-tee is suitable for use on pipe to EN10220 and EN10255.

During installation, the locating collar engages the pre-cut pipe-hole, and when tightened, the gasket is compressed onto the O.D. of the pipe forming a leak-free seal.

The Style 912 Sprinkler-tee is FM approved for up to 300 psi/2058kPa, and VdS and LPCB approved up to 232 psi/16bar, at ambient temperatures that are typical for fire protection systems.



**MATERIAL SPECIFICATIONS**

**Housing:** Ductile iron conforming to ASTM A-536, grade 65-45-12. Ductile iron conforming to ASTM A-395, grade 65-45-15, is available upon special request.

**Housing Coating:**

- Red enamel or hot-dipped galvanized

**Gasket:**

- Grade "E" EPDM - Type A

(Violet color code). FireLock products have been Listed by Underwriters Laboratories Inc. and Approved by Factory Mutual Research for wet and dry (oil free air) sprinkler services up to the rated working pressure using the Grade "E" Type A Gasket System.

**Bolts/Nuts:** Heat-treated plated carbon steel, trackhead meeting the physical and chemical requirements of ASTM A-449 and physical requirements of ASTM A-183.

**JOB/OWNER**

System No. \_\_\_\_\_

Location \_\_\_\_\_

**CONTRACTOR**

Submitted By \_\_\_\_\_

Date \_\_\_\_\_

**ENGINEER**

Spec Sect \_\_\_\_\_ Para \_\_\_\_\_

Approved \_\_\_\_\_

Date \_\_\_\_\_

[www.victaulic.com](http://www.victaulic.com)

VICTAULIC IS A REGISTERED TRADEMARK OF VICTAULIC COMPANY. © 2009 VICTAULIC COMPANY. ALL RIGHTS RESERVED.

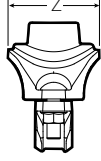
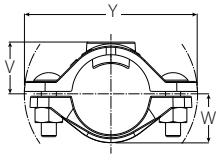
REV\_D



# FireLock® Low-Profile Sprinkler-Tee

STYLE 912

## DIMENSIONS



Nominal Size (inches) Actual (mm)		Hole Diameter					Approximate Weight Each
Run x Branch FPT†		+0.06/+1,5 -0.00/-0,0	V	W	Y	Z	lbs/kg
1 33.7	x ½ 21.3	15/16 24.0	1.00 25.4	0.90 22.9	3.72 94.6	1.50 38.1	0.67 0.30
1¼ 42.4	x ½ 21.3	15/16 24.0	1.17 29.8	1.10 27.9	4.12 104.7	1.50 38.1	0.74 0.33
1½ 48.3	x ½ 21.3	15/16 24.0	1.29 32.8	1.22 31.0	4.32 109.8	1.50 38.1	0.76 0.34

† Style 912 Low-Profile Sprinkler Outlet-T products are designed with female threads to ISO 7-Rp 1/2 (Rp 1/2 BSPP per BS21) and can accommodate only male sprinkler threads. FOR SPRINKLER USE ONLY. DO NOT USE AS A BRANCH OUTLET.

## INSTALLATION

Reference should always be made to the I-100 Victaulic Field Installation Handbook for the product you are installing. Handbooks are included with each shipment of Victaulic products for complete installation and assembly data, and are available in PDF format on our website at [www.victaulic.com](http://www.victaulic.com).

## WARRANTY

Refer to the Warranty section of the current Price List or contact Victaulic for details.

## NOTE

This product shall be manufactured by Victaulic or to Victaulic specifications. All products to be installed in accordance with current Victaulic installation/assembly instructions. Victaulic reserves the right to change product specifications, designs and standard equipment without notice and without incurring obligations.

For complete contact information, visit [www.victaulic.com](http://www.victaulic.com)

10.53 5516 REV D UPDATED 1/2010

VICTAULIC IS A REGISTERED TRADEMARK OF VICTAULIC COMPANY. © 2009 VICTAULIC COMPANY. ALL RIGHTS RESERVED.

